



GAT MONTHLY MEMBERSHIP PROGRESS REPORT

Results as of: 6/30/2022

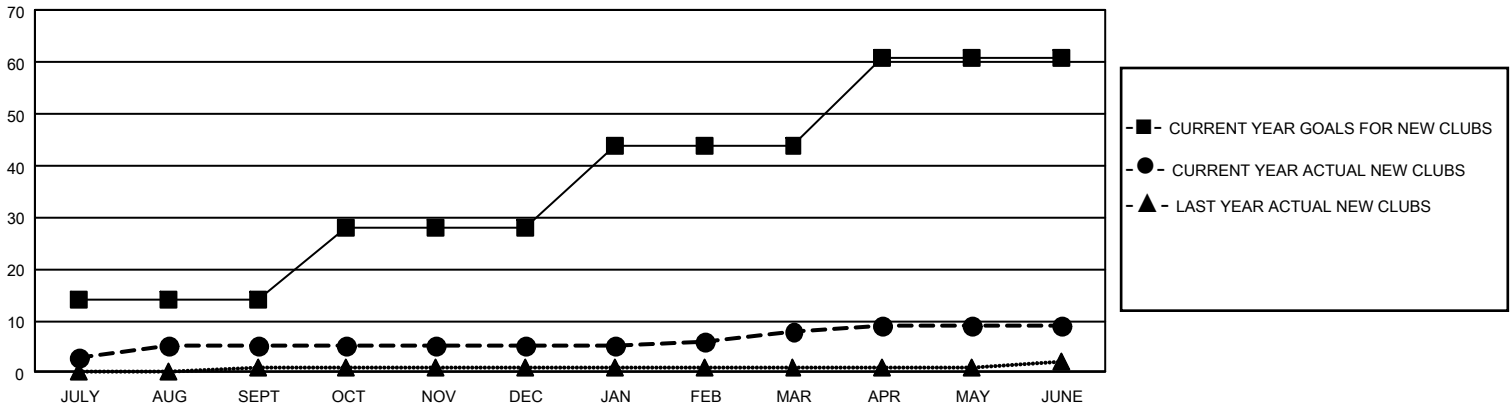
GAT Constitutional Area 5 - China

REPORT DOES NOT INCLUDE CLUBS IN UNDISTRICTED AREAS.

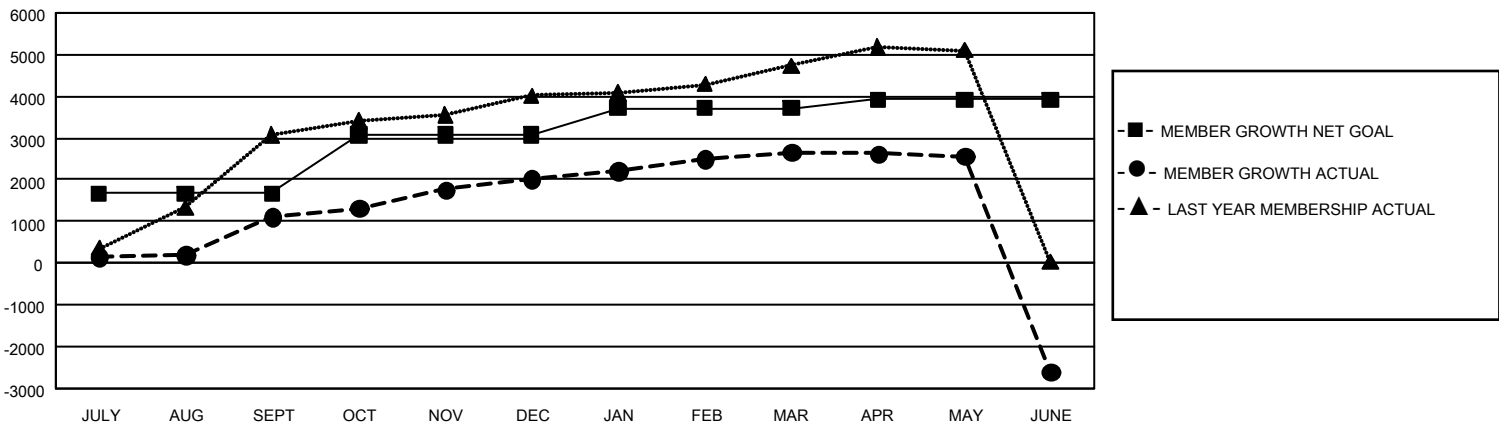
Clubs			
RESULTS FOR 2021-2022			
QUARTER	NEW CLUB GOAL	NEW CLUBS	DROPPED CLUBS
JULY/AUG/SEPT	42	5	10
OCT/NOV/DEC	42	0	3
JAN/FEB/MAR	48	3	0
APR/MAY/JUNE	51	1	4

Members			
RESULTS FOR 2021-2022			
QUARTER	MEMBER GROWTH NET GOAL	MEMBER GROWTH ACTUAL	DROPPED MEMBERS ACTUAL (including transfers)
JULY/AUG/SEPT	1668	1,765	404
OCT/NOV/DEC	1398	1,465	302
JAN/FEB/MAR	651	877	154
APR/MAY/JUNE	202	944	5,876

GOALS AND ACTUAL NEW CLUBS CUMULATIVE



GOALS AND ACTUAL MEMBERS CUMULATIVE



DROPPED CLUBS: 17	
DROPPED MEMBERS	
DECEASED	24
CLUB CANCELLED	131
OTHER	6,581
TOTAL	6,736

872 CLUBS OF 1,363 ADDED 1 OR MORE NEW MEMBERS

[CLICK HERE FOR CUMULATIVE MEMBERSHIP DATA](#)

GENDER DISTRIBUTION	
MALE	18,641 (62.25%)
FEMALE	11,305 (37.75%)
NON BINARY	0 (0.00%)
PREFER NOT TO ANSWER	0 (0.00%)
TOTAL FAMILY UNIT MEMBERS	1,901
FAMILY MEMBERS PAYING HALF DUES	975